

Light efficiency:

n/a Lumen/Watt

Light quality:

CRI: 91.1

Color temperature:

3589 K

Output: 370 lm/ft

Peak: 112 cd

Power: 0.00 W

PF: n/a

No photo

Product name:

ThermaLine 3 -3500K

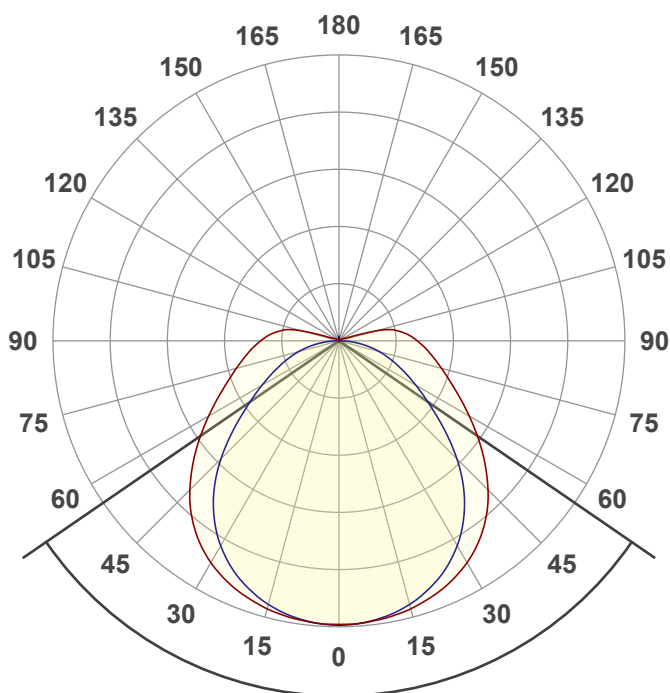
Item number:

AL-01-65-2468

Date and time:

7/15/2025 8:54:40 AM

Description:



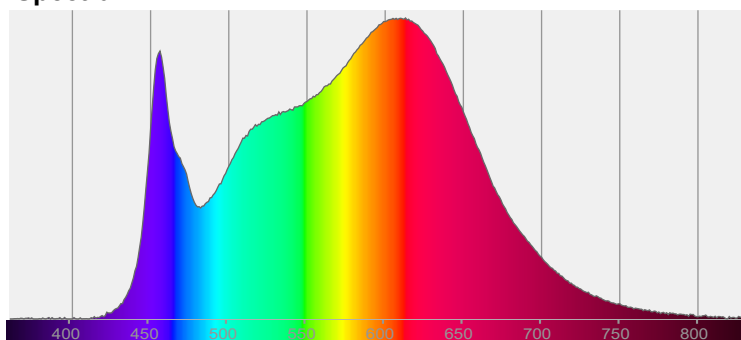
Beam angle

111°

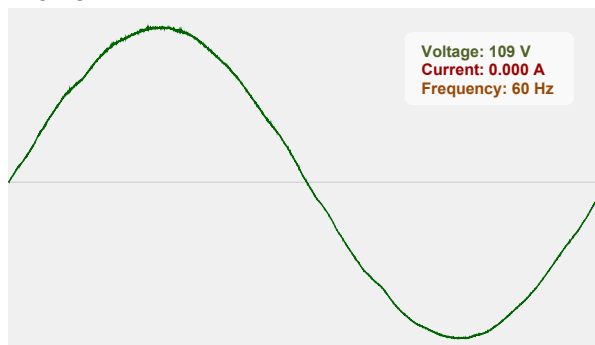


CIE 1931
x: 0.403
y: 0.394

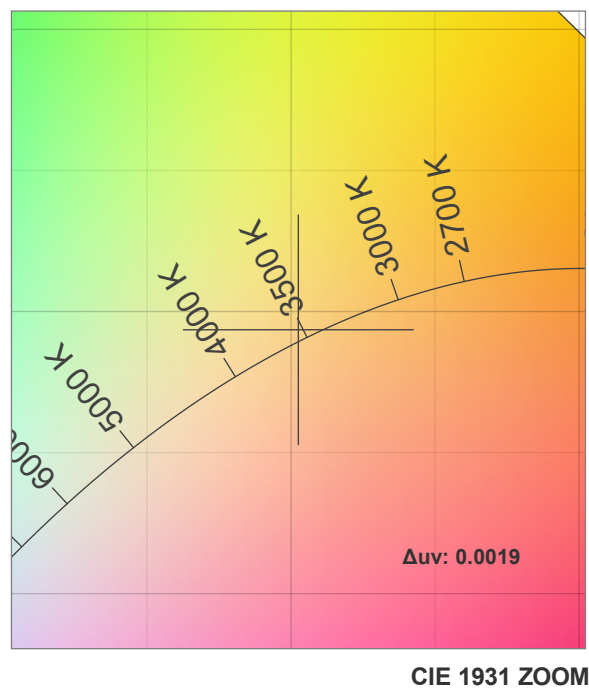
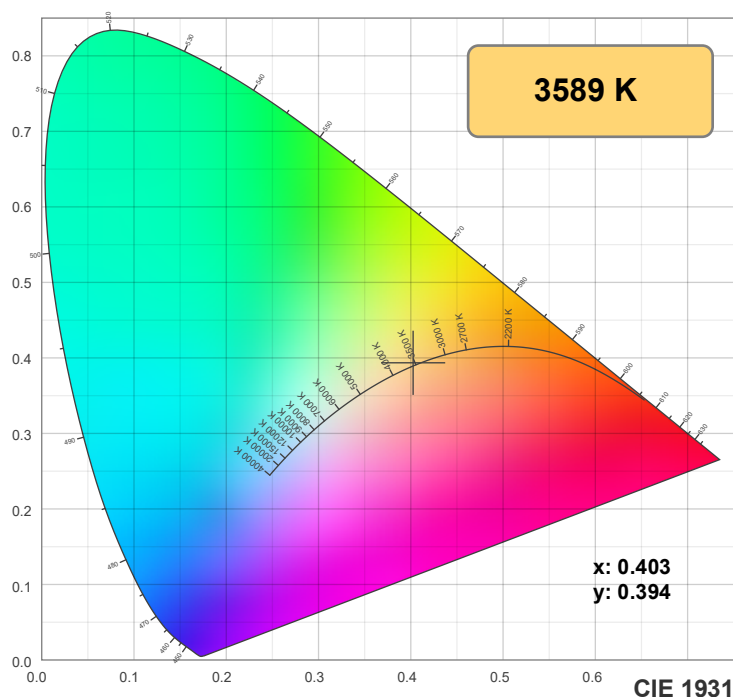
Spectra



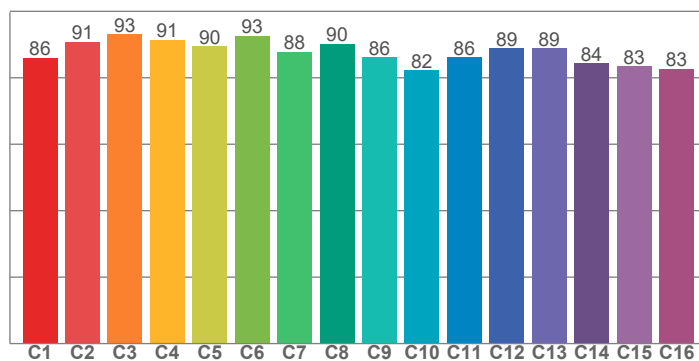
Power



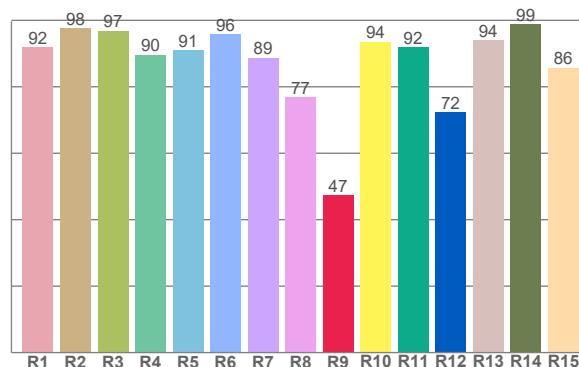
Voltage: 109 V
Current: 0.000 A
Frequency: 60 Hz



TM30: 87.8



CRI: 91.1 (R1-R8)



CRI R values, only R1-R8 are used to calculate final CRI value

R1	R2	R3	R4	R5	R6	R7	R8	R9	R10	R11	R12	R13	R14	R15
92.0	97.6	96.9	89.6	91.1	95.8	88.8	76.9	47.3	93.6	91.9	72.3	94.1	98.9	85.7

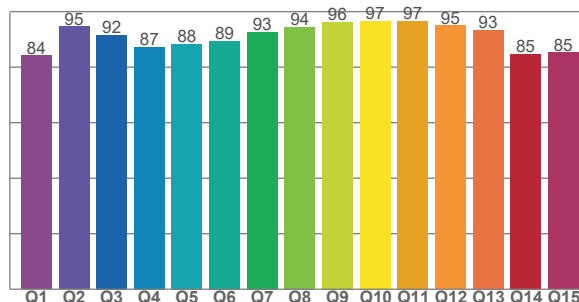
TM30 C values, 16 binned values out of total of 99 C values

C1	C2	C3	C4	C5	C6	C7	C8	C9	C10	C11	C12	C13	C14	C15	C16
86.0	90.8	93.0	91.4	89.5	92.7	87.8	90.3	86.2	82.3	86.1	88.8	88.9	84.4	83.4	82.8

CQS Q values

Q1	Q2	Q3	Q4	Q5	Q6	Q7	Q8	Q9	Q10	Q11	Q12	Q13	Q14	Q15
84.2	94.7	91.5	87.3	88.3	89.4	92.7	94.5	96.2	96.7	96.6	95.0	93.3	84.8	85.2

CQS: 90.3



Color parameters

Color temperature	Color rendering Index	Red component	Color fidelity	Color gamut	Color quality scale	Color coordinate cie 1931	Color coordinate cie 1931	Color coordinate	Color coordinate	Color deviation from black body
CCT	CRI	CRI R9	TM30 Rf	TM30 Rg	CQS	x	y	u	v	Δuv
3589 K	91.1	47.3	87.8	94.5	90.3	0.403	0.394	0.233	0.341	0.0019

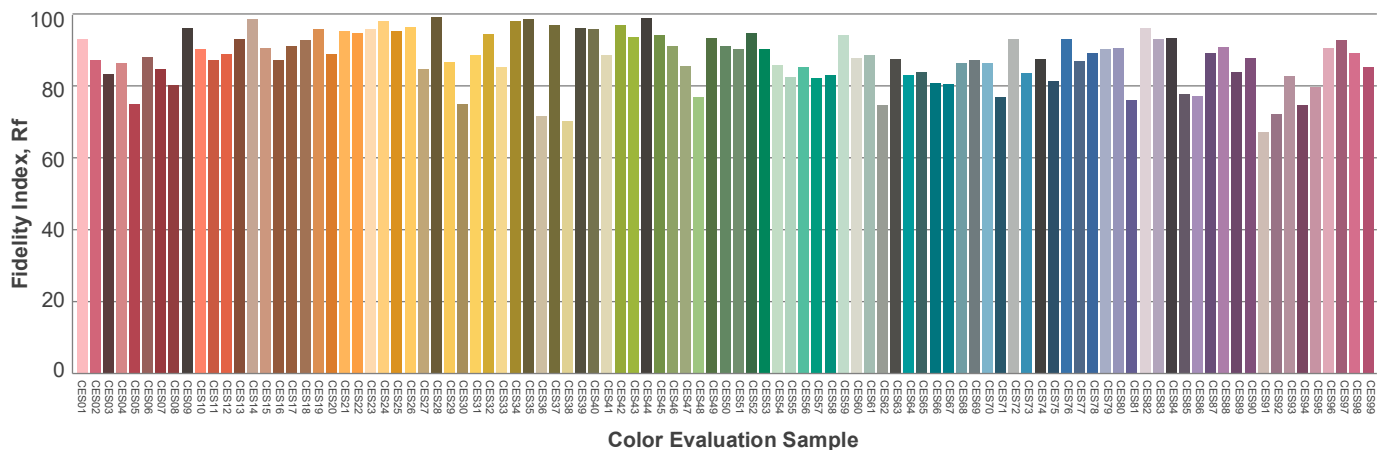
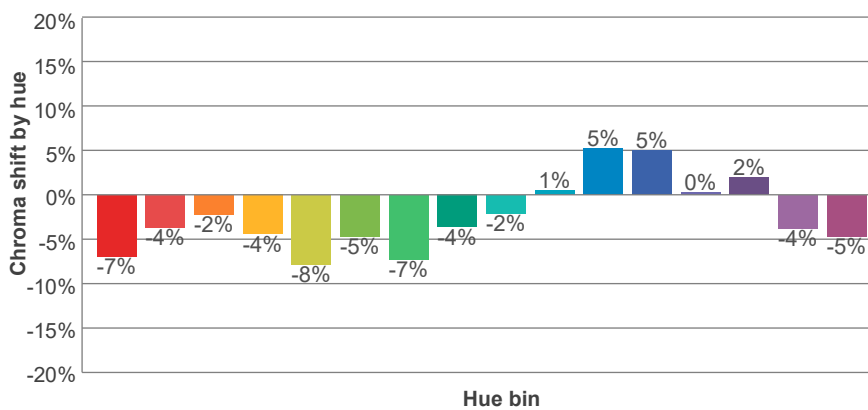
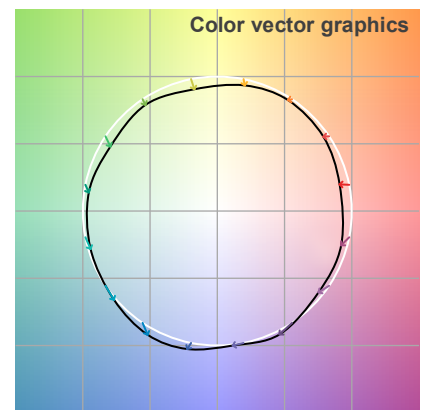
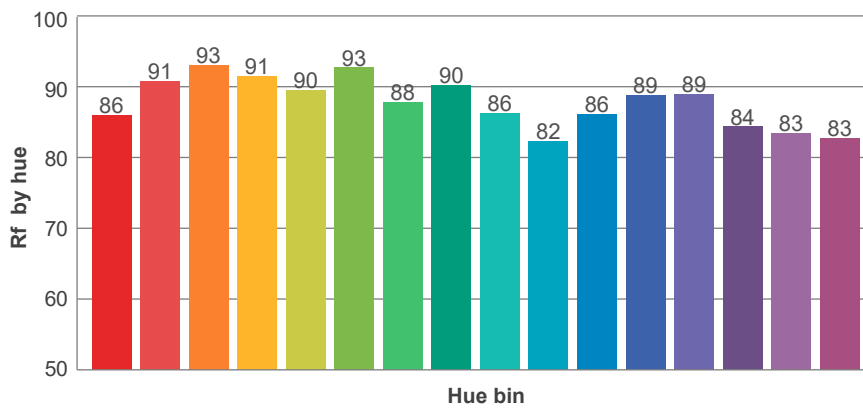
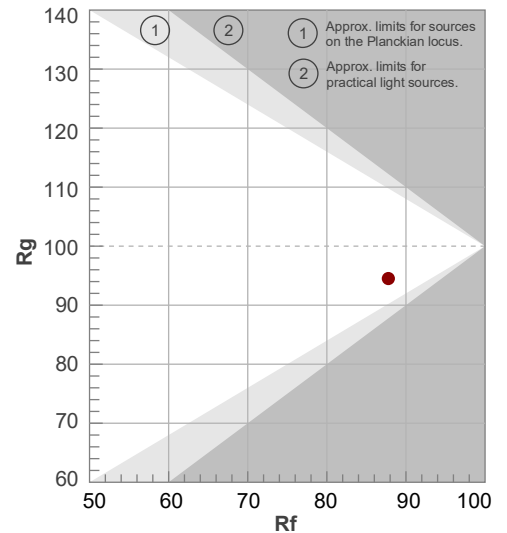
Rf 87.8

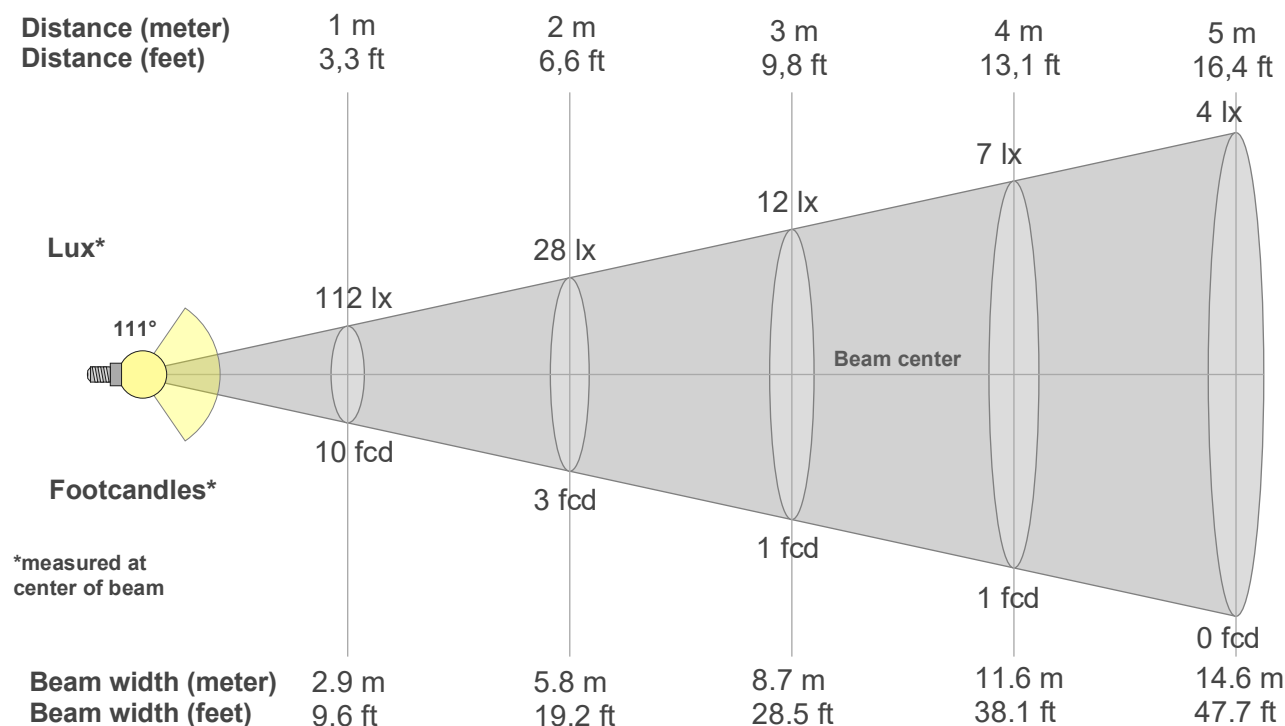
Fidelity index Rf

Rg 94.5

Gamut index Rg

Hue Bin	R _f	Shifts (%)	
		Chroma	Hue
1	86	-7%	2%
2	91	-4%	2%
3	93	-2%	2%
4	91	-4%	-2%
5	90	-8%	-1%
6	93	-5%	1%
7	88	-7%	4%
8	90	-4%	5%
9	86	-2%	9%
10	82	1%	12%
11	86	5%	8%
12	89	5%	-2%
13	89	0%	-8%
14	84	2%	-13%
15	83	-4%	-8%
16	83	-5%	-7%





Beam intensities from 1-20m

1m	2m	3m	4m	5m	6m	7m	8m	9m	10m	11m	12m	13m	14m	15m	16m	17m	18m	19m	20m
3.3ft	6.6ft	9.8ft	13.1ft	16.4ft	19.7ft	23ft	26.2ft	29.5ft	32.8ft	36.1ft	39.4ft	42.7ft	45.9ft	49.2ft	52.5ft	55.8ft	59.1ft	62.3ft	65.6ft
112lx	28lx	12lx	7lx	4lx	3lx	2lx	2lx	1lx	1lx	1lx	1lx	1lx	1lx	0lx	0lx	0lx	0lx	0lx	0lx
10.4fcd	2.6fcd	1.2fcd	0.6fcd	0.4fcd	0.3fcd	0.2fcd	0.2fcd	0.1fcd	0.1fcd	0.1fcd	0.1fcd	0.1fcd	0.1fcd	0fcd	0fcd	0fcd	0fcd	0fcd	0fcd

Intensities in 0° c-plane

0°	9°	18°	27°	36°	45°	54°	63°	72°	81°	90°	99°	108°	117°	126°	135°	144°	153°	162°	171°
112	111	108	103	95	83	69	55	45	37	31	24	7	2	1	1	1	1	1	1
100%	99%	97%	92%	85%	74%	61%	49%	40%	33%	28%	21%	6%	2%	1%	1%	0%	0%	0%	0%

Intensities in 90° c-plane

0°	9°	18°	27°	36°	45°	54°	63°	72°	81°	90°	99°	108°	117°	126°	135°	144°	153°	162°	171°
112	110	105	97	84	66	45	31	20	10	2	1	0	0	0	0	0	1	1	1
100%	99%	94%	87%	75%	59%	41%	27%	18%	9%	2%	0%	0%	0%	0%	0%	0%	0%	0%	0%

Intensities in 180° c-plane

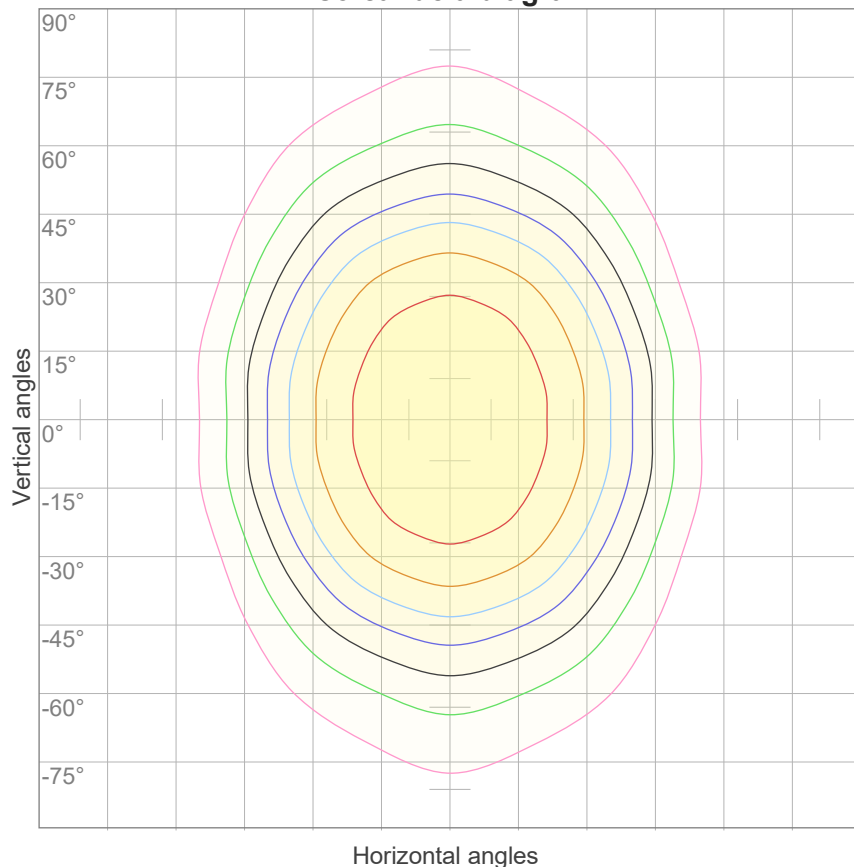
0°	9°	18°	27°	36°	45°	54°	63°	72°	81°	90°	99°	108°	117°	126°	135°	144°	153°	162°	171°
112	111	108	103	95	83	69	55	45	37	31	24	7	2	1	1	1	1	1	1
100%	99%	97%	92%	85%	74%	61%	49%	40%	33%	28%	21%	6%	2%	1%	1%	0%	0%	0%	0%

Intensities in 270° c-plane

0°	9°	18°	27°	36°	45°	54°	63°	72°	81°	90°	99°	108°	117°	126°	135°	144°	153°	162°	171°
112	110	105	97	84	66	45	31	20	10	2	1	0	0	0	0	0	1	1	1
100%	99%	94%	87%	75%	59%	41%	27%	18%	9%	2%	0%	0%	0%	0%	0%	0%	0%	0%	0%

Beam angle 50%	Field angle 10%	Cutoff angle 2,5%	Intensity ratio in 120° cone	Intensity ratio in 90° cone
111°	191.1°	205.9°	68.2%	47.1%

iso-candela diagram



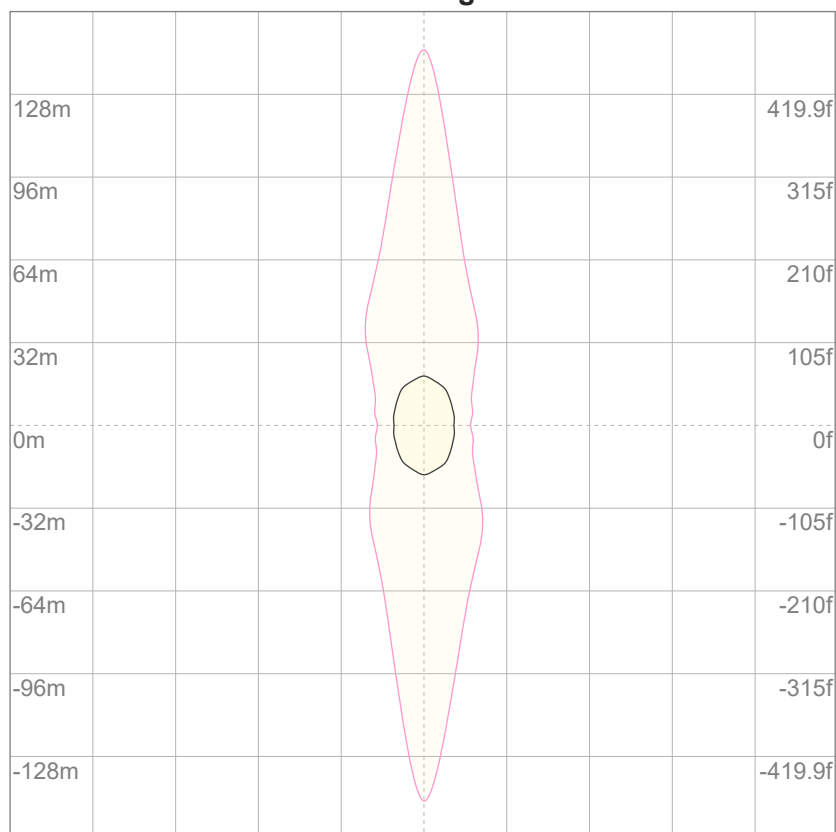
10%	11 cd
20%	22 cd
30%	34 cd
40%	45 cd
50%	56 cd
60%	67 cd
70%	78 cd
80%	89 cd
90%	101 cd

Conditions:

Number of c-planes: 12

Candela at center: 112 cd

iso-lux diagram



3%	33.5m lx
5%	55.9m lx
10%	0.112 lx
30%	0.335 lx
50%	0.559 lx

Conditions:

Number of c-planes: 12

Lux at center: 1.12 lx

*Lux distribution on a surface
when lamp is mounted at 10
meters from the surface.*

p Ceiling	70	70	50	50	30	70	70	50	50	30
p Walls	50	30	50	30	30	50	30	50	30	30
p Floor	20	20	20	20	20	20	20	20	20	20
Room size X Y	Viewing direction at right angles to lamp axis					Viewing direction parallel to lamp axis				
n/a	n/a	n/a	n/a	n/a	n/a	n/a	n/a	n/a	n/a	n/a
n/a	n/a	n/a	n/a	n/a	n/a	n/a	n/a	n/a	n/a	n/a
n/a	n/a	n/a	n/a	n/a	n/a	n/a	n/a	n/a	n/a	n/a
n/a	n/a	n/a	n/a	n/a	n/a	n/a	n/a	n/a	n/a	n/a
n/a	n/a	n/a	n/a	n/a	n/a	n/a	n/a	n/a	n/a	n/a
n/a	n/a	n/a	n/a	n/a	n/a	n/a	n/a	n/a	n/a	n/a
n/a	n/a	n/a	n/a	n/a	n/a	n/a	n/a	n/a	n/a	n/a
n/a	n/a	n/a	n/a	n/a	n/a	n/a	n/a	n/a	n/a	n/a
n/a	n/a	n/a	n/a	n/a	n/a	n/a	n/a	n/a	n/a	n/a
n/a	n/a	n/a	n/a	n/a	n/a	n/a	n/a	n/a	n/a	n/a
n/a	n/a	n/a	n/a	n/a	n/a	n/a	n/a	n/a	n/a	n/a
n/a	n/a	n/a	n/a	n/a	n/a	n/a	n/a	n/a	n/a	n/a
n/a	n/a	n/a	n/a	n/a	n/a	n/a	n/a	n/a	n/a	n/a
n/a	n/a	n/a	n/a	n/a	n/a	n/a	n/a	n/a	n/a	n/a
n/a	n/a	n/a	n/a	n/a	n/a	n/a	n/a	n/a	n/a	n/a
n/a	n/a	n/a	n/a	n/a	n/a	n/a	n/a	n/a	n/a	n/a
n/a	n/a	n/a	n/a	n/a	n/a	n/a	n/a	n/a	n/a	n/a
n/a	n/a	n/a	n/a	n/a	n/a	n/a	n/a	n/a	n/a	n/a
n/a	n/a	n/a	n/a	n/a	n/a	n/a	n/a	n/a	n/a	n/a
n/a	n/a	n/a	n/a	n/a	n/a	n/a	n/a	n/a	n/a	n/a
Variation of the observer position for the luminaire distance S										
n/a	n/a					n/a				
n/a	n/a					n/a				
n/a	n/a					n/a				
CIE 117-1995. Corrected glare indices referring to 370 lm total luminous flux										

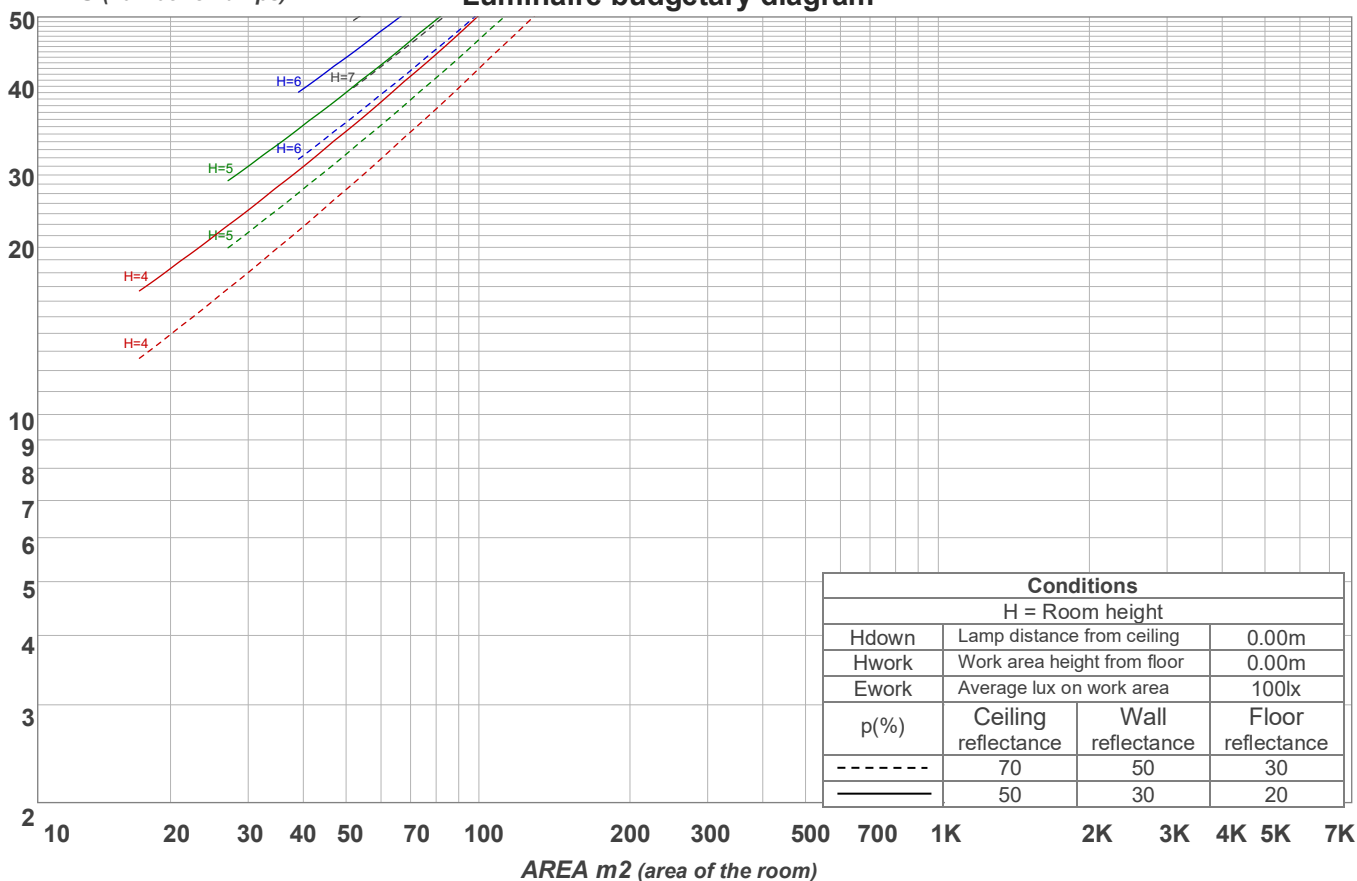
Viso Systems Aps – Copenhagen, Denmark – www.visosystems.com

Coefficients of Utilization

Ceiling reflectance	80				70				50			30			10			0
Wall reflectance	70	50	30	10	70	50	30	10	50	30	10	50	30	10	50	30	10	0
Floor reflectance	20	20	20	20	20	20	20	20	20	20	20	20	20	20	20	20	20	0
RCR	(RCR: Room Cavity Ratio) Room Values are expressed as percentage of Lumens delivered to the task surface																	
0	117	117	117	117	114	114	114	114	107	107	107	101	101	101	96	96	96	93
1	105	100	95	90	102	97	92	88	91	88	84	86	83	80	82	79	77	74
2	95	86	79	73	92	84	77	71	79	73	69	75	70	66	71	67	64	61
3	87	76	67	60	84	73	66	59	70	63	57	66	60	55	62	58	54	51
4	79	67	58	51	77	65	57	50	62	54	49	59	52	47	56	50	46	43
5	73	60	50	44	70	58	50	43	55	48	42	53	46	41	50	44	40	37
6	67	54	45	38	65	52	44	38	50	42	37	48	41	36	45	40	35	33
7	62	49	40	34	60	48	39	33	45	38	32	43	37	32	41	36	31	29
8	58	44	36	30	56	43	35	30	42	34	29	40	33	28	38	32	28	26
9	54	41	32	27	53	40	32	27	38	31	26	37	30	26	35	29	25	23
10	51	38	30	24	49	37	29	24	35	28	24	34	28	23	33	27	23	21

LAMPS (number of lamps)

Luminaire budgetary diagram



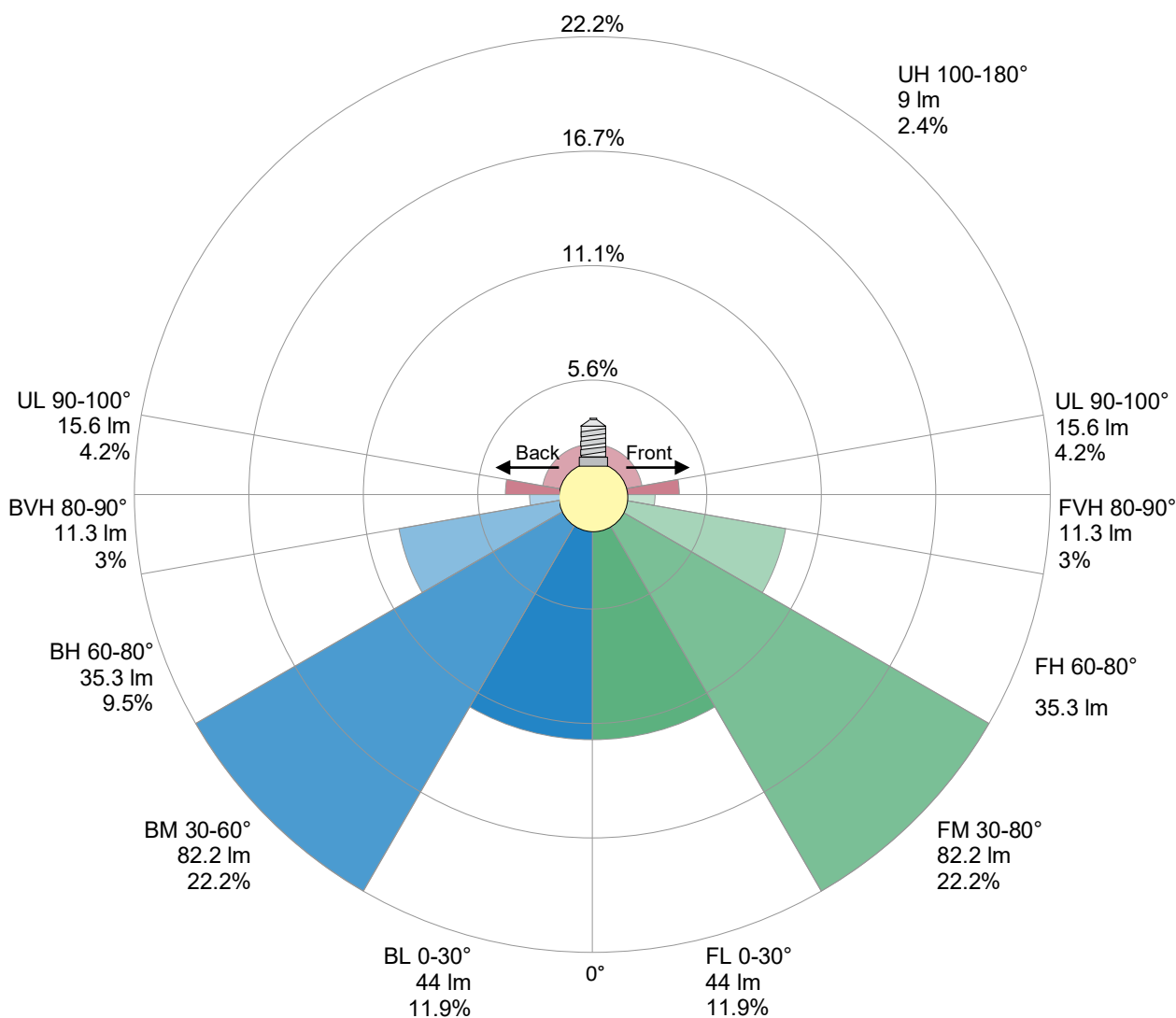
Zonal Lumen Summary

0°-10°	10°-20°	20°-30°	30°-40°	40°-50°	50°-60°	60°-70°	70°-80°	80°-90°
{LUM0-10}	30.6 lm	46.9 lm	56.9 lm	57.7 lm	50.0 lm	39.8 lm	30.7 lm	22.5 lm
90°-100°	100°-110°	110°-120°	120°-130°	130°-140°	140°-150°	150°-160°	160°-170°	170°-180°
15.6 lm	6.11 lm	1.09 lm	0.629 lm	0.431 lm	0.317 lm	0.240 lm	0.153 lm	0.054 lm

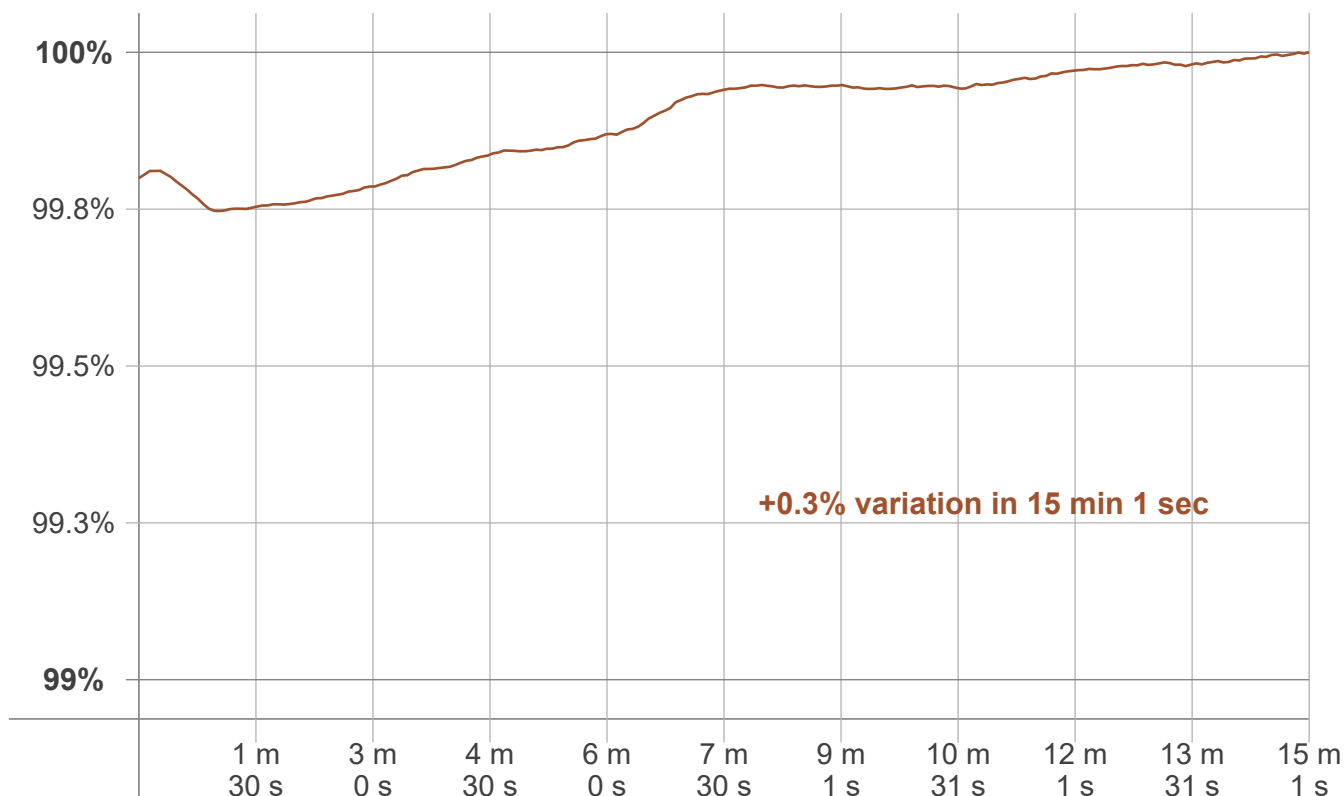
LCS table

BUG rating:	B0 U2 G1	
Forward light	Lumens	Lumens %
Low(0-30):	44	11.9%
Medium(30-60):	82.2	22.2%
High(60-80):	35.3	9.5%
Very high(80-90):	11.3	3%
Back light		
Low(0-30):	44	11.9%
Medium(30-60):	82.2	22.2%
High(60-80):	35.3	9.5%
Very high(80-90):	11.3	3%
Uplight		
Low(90-100):	15.6	4.2%
High(100-180):	9	2.4%

LCS graph



Warmup curve



Warmup result

Warmup time:	Lamp stabilized in 15 min 1 sec
Warmup variation	+0.3%

Warmup conditions

Stable period:	15 min
Stable change max:	2.0%
Minimum time:	15 min

Color temperature change

CCT start	CCT change	CCT end
3607 K	-18 K	3589 K

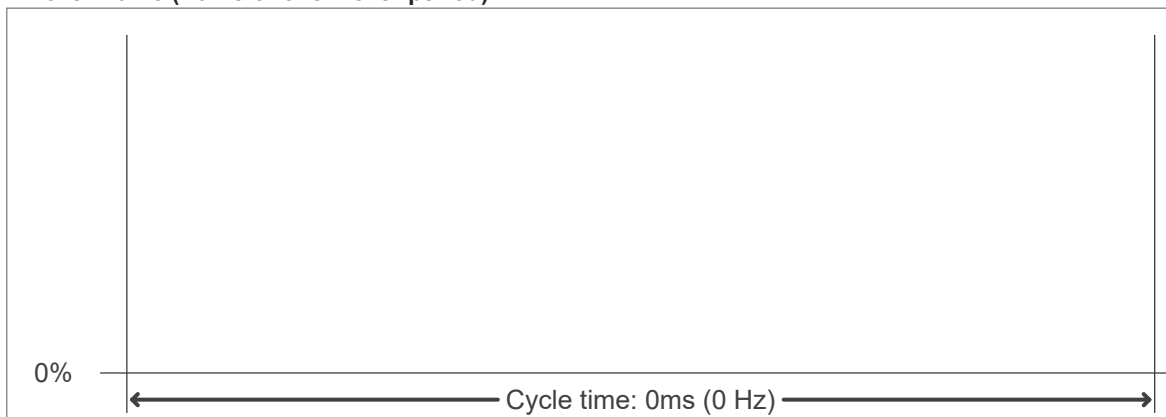
Output change

Output start	Output change	Output end
369 lm	+1 lm	370 lm

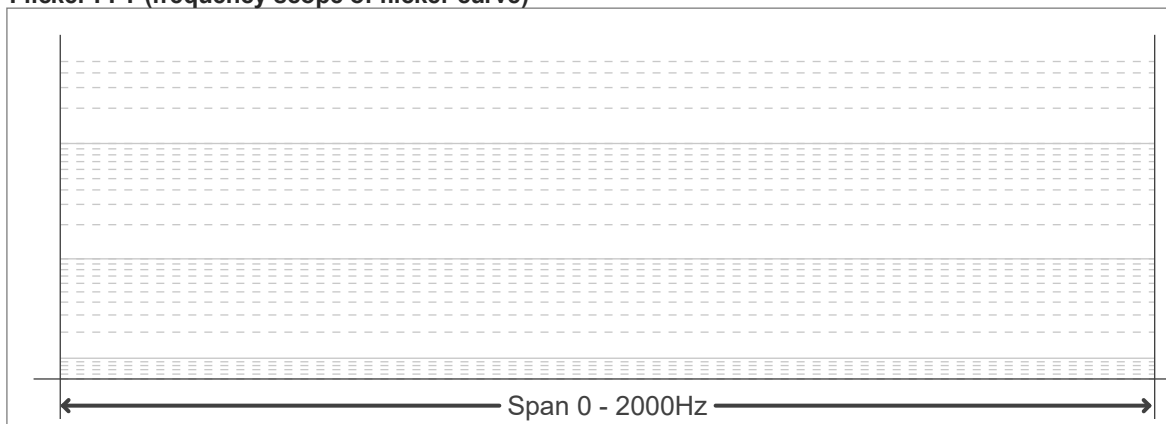
Flicker curve (complete sampled flicker signal)



Flicker frame (frame of one flicker period)



Flicker FFT (frequency scope of flicker curve)



Flicker results:

Flicker frequency:		n/a Hz	
Flicker index:	n/a	JA8/10 40Hz	n/a %
Flicker percentage:	n/a %	JA8/10 90Hz	n/a %
SVM: (Visual flicker)	n/a	JA8/10 200Hz	n/a %
PstLM	n/a	JA8/10 400Hz	n/a %
Mp	n/a	JA8/10 1000Hz	n/a %

Flicker conditions:

Sample rate:	n/a samples/second
--------------	--------------------